



Villa  
Monticelli



## Villa Monticelli

Villa Monticelli is an exquisite, renovated farmhouse set right on the hills of the Antognolla Golf Course. Its strategic position offers breath-taking views of the Umbrian countryside and its rolling hills. The road to the villa itself never fails to amaze, with views over the majestic Antognolla Castle, which dates back to the XI century. The traditional appearance of Villa Monticelli, surrounded by century-old olive trees, gives way to the modern yet elegant interiors. The villa boasts an infinity pool with stunning views as far as the eye can see. With its expansive terraces and pergola, guests can enjoy leisurely breakfasts, lunches and sunset aperitivos immersed in the quiet oasis only this side of Umbria can offer.



SLEEPS  
10+4

BEDROOMS  
6

BATHROOMS  
5+1

POOL  
7,5x16,5







## The main unit



SLEEPS  
6 + 4



BEDROOMS  
4



BATHROOMS  
3 + 1







- The fully equipped kitchen



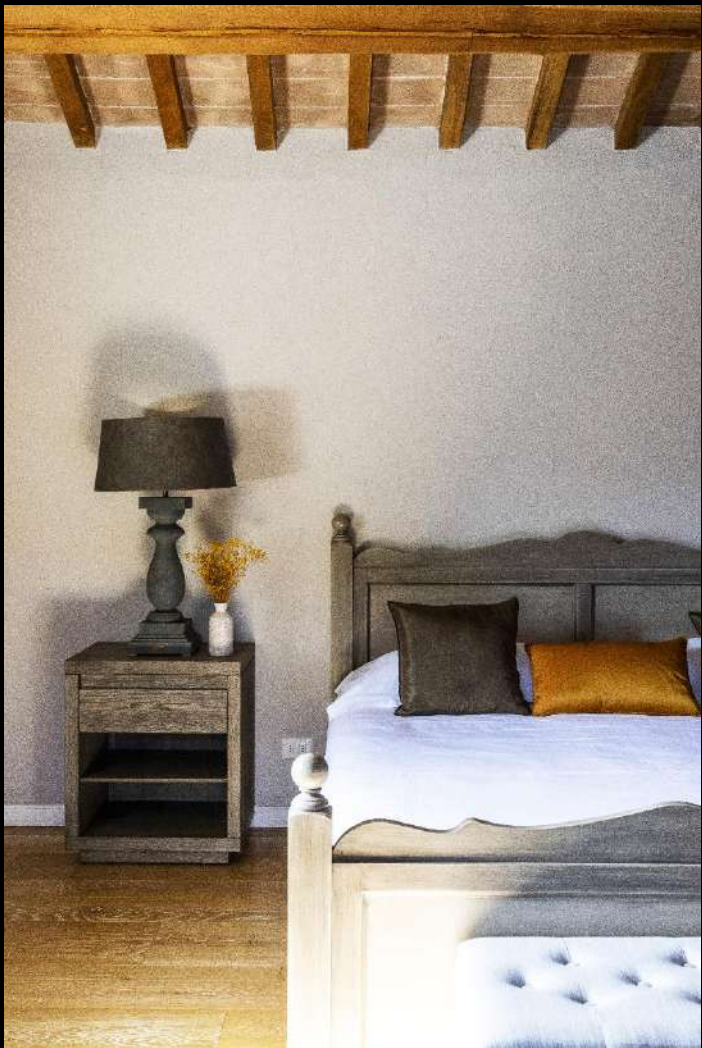
- The dining room





The super king bedroom with bathroom





King size bedroom with bathroom



Super king size bedroom



With bathroom shared with the bunk beds bedroom





Living room with TV and access to the outside







## The pool house



SLEEPS  
4



BEDROOMS  
2



BATHROOMS  
2













The two King size bedrooms  
with bathroom







# Floor Plan – Main Unit

## Floor -1

- Living room with TV with access to the outside
- Laundry Room
- Bedroom 3 with access to the outside
- Children's Bunk beds bedroom
- Shared Bathroom (3/4) with shower



**Bedroom 4**

Beds Size: 1,85x1,30  
95X1,90

Room Type: BUNK BEDS

Floor: FLOOR -1

Bathroom: SHARED, SHOWER

AIR CONDITIONING



**Bedroom 3**

Bathroom: SHARED, SHOWER

Room Type: SUPER KING

Floor: FLOOR -1

EXTERIOR ACCESS

AIR CONDITIONING

Bed Size: 1,95x2



**Ground Floor**

- Kitchen with access to the outside (main entrance)
- Dining room
- Few steps down to:
- Small bathroom
- Sitting Room with fireplace with access to the outside

Few steps up to staircase landing with access to the outside terrace



# Floor Plan – Main Unit



**Master Bedroom 1**

Room Type: SUPER KING

Floor: FIRST FLOOR

Beds Size: 1,95x2

Bathroom: ENSUITE, SHOWER AND BATHTUB

AIR CONDITIONING



**First Floor**

- Living room with TV with access to the outside
- Laundry Room
- Bedroom 3 with access to the outside
- Children's Bunk beds bedroom
- Shared Bathroom (3/4) with shower



**Bedroom 2**

Room Type: KING

Floor: FIRST FLOOR

Beds Size: 1,95x1,85

Bathroom: ENSUITE, SHOWER

AIR CONDITIONING



# Floor Plan – Pool House



**Bedroom 1**

Room Type: KING

Floor: GROUND FLOOR

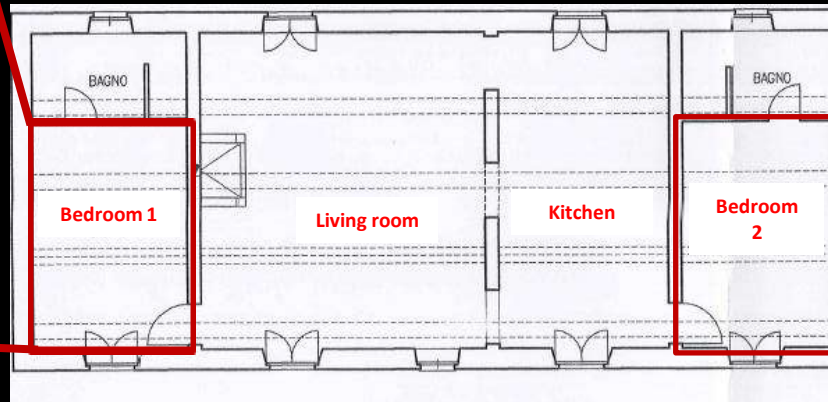
Beds Size: 1,80x2

Bathroom: ENSUITE, SHOWER

AIR CONDITIONING

## Ground Floor

- Kitchen with access to the outside (main entrance)
- Living room with fireplace and access to the outside
- Bedroom 1 with bathroom with shower and access to the outside
- Bedroom 2 with bathroom with shower and access to the outside



## Bedroom 2

Room Type: KING

Floor: GROUND FLOOR

Beds Size: 1,80x2

Bathroom: ENSUITE, SHOWER

AIR CONDITIONING

