



VILLA MOLINELLA
TENUTA DI MURLO



VILLA MOLINELLA

THE PROPERTY

Tucked away within the valley of Murlo, alongside one of the picturesque streams of the Estate, lies Villa Molinella.

Molinella is the ultimate retreat for those looking to live in splendid seclusion, taking pleasure from the wonders of nature. Guests can bask in the morning sunshine surrounded by the peaceful sound of the river whilst enjoying their morning espresso. We then recommend venturing on walks to seek out the natural pools nearby before returning to relax in the private underground jacuzzi within the ancient vault of this restored XIII century mill.



SLEEPS
2



BEDROOMS
2



BATHROOMS
2



JACUZZI
2 PEOPLE



POOL
11 M X 5,90 M



SAUNA
2 PEOPLE



HOT TUB

The wild beauty of Villa Molinella





Villa Molinella in the first rays of light

LOCATION

Nearest Airports

Perugia
30 km - 30 min

Roma
230 km - 2 h 30 min

Firenze
169 km - 2 h

Ancona
136 km - 1 h 40 min

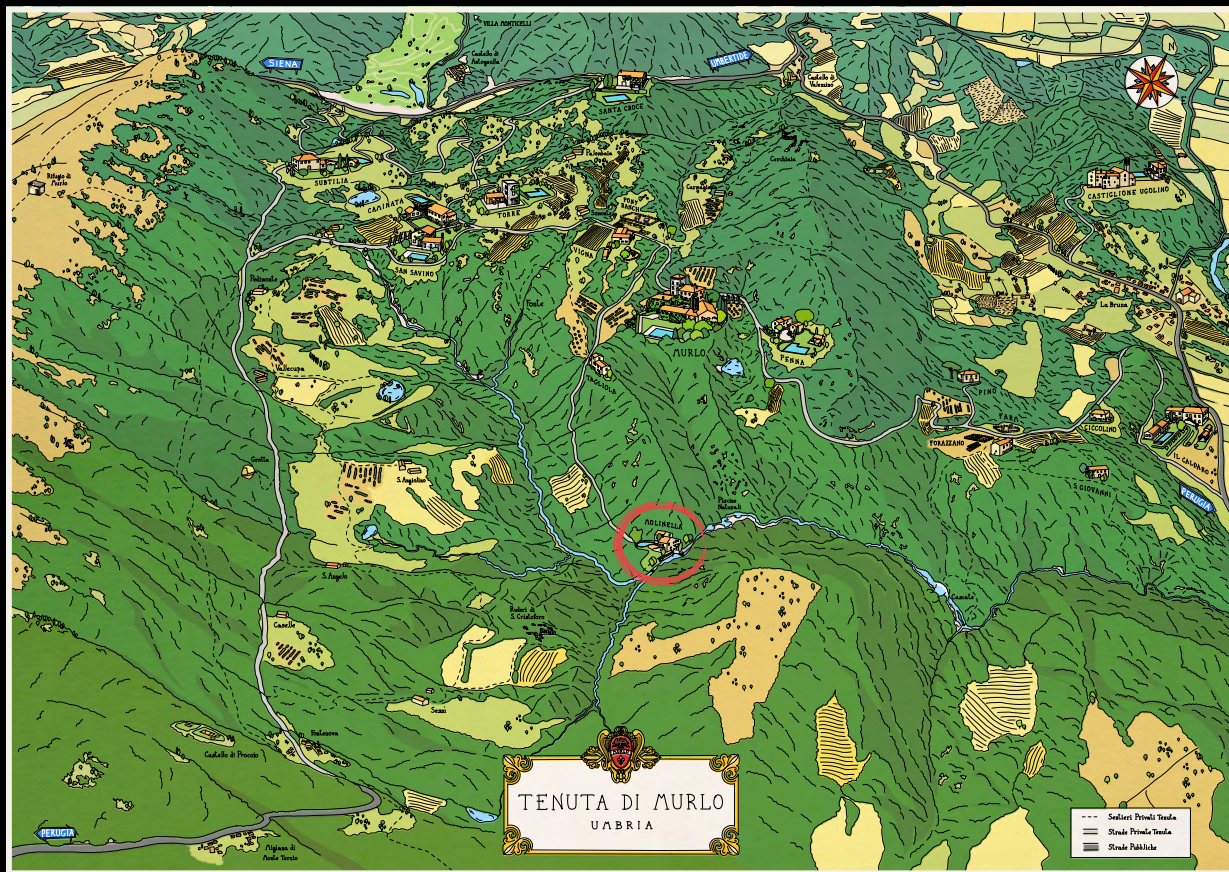
Nearest Cities

Umbertide
15 km - 20 min

Perugia
20 km - 25 min

Assisi
47 km - 40 min

Cortona
48 km - 45 min



*Tenuta di Murlo map
Outlined by the circle Villa Molinella*



AMENITIES

- Private pool (approx 45 mq with steps)
- Private sauna
- Heated indoor whirlpool in the 13th century ancient mill vault, with access from the living room and with views of the stream
- Outdoor hot tub by the stream
- Sunbeds by the stream and on the terrace around the pool
- Spectacular terrace with pergola in front of the dining room by the stream, with dining table and chairs seating 4
- Air conditioning throughout the villa
- Firepit
- Private garden
- Barbecue available on request
- Table tennis available on request
- Private parking onsite





The living room with access to the underground Jacuzzi overlooking the river



The comfortable furniture of the living room



The fully equipped kitchen on the ground floor



Dining and kitchen area with access to the terrace with pergola



Furniture detail of the dining room on the ground floor





The main king size bedroom with access to the pool area



The main bedroom en-suite bathroom with shower and bathtub



The second king size bedroom on the first floor



The second en-suite bathroom with shower



The courtyard and the wooden hot tub by the stream



The shaded pergola beside the villa overlooking the stream



Immerse yourself in nature



Villa Molinella surroundings

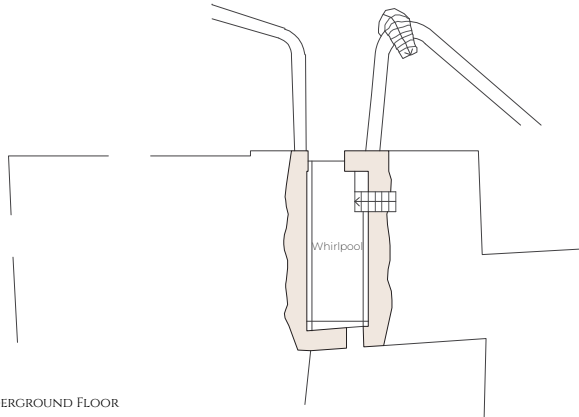
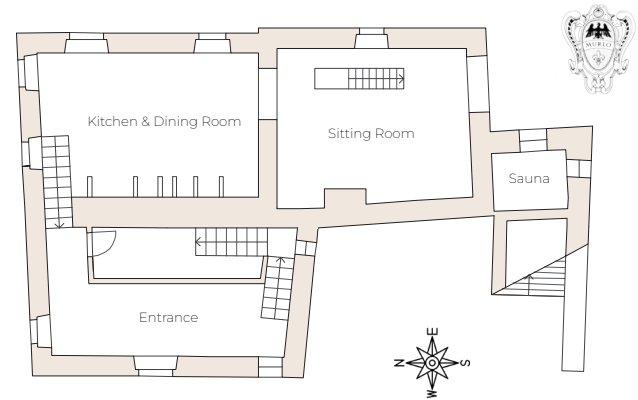
Villa Molinella from above



VILLA MOLINELLA

GROUND FLOOR

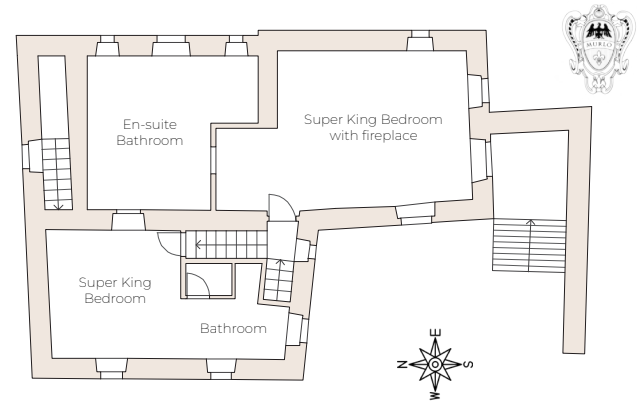
- Entrance with stairs down to kitchen and dining room and up to the first floor
- Kitchen and dining room with access to the terrace with pergola
- Sitting room with access to the underground indoor whirlpool and to the sauna (outdoor)



VILLA MOLINELLA

FIRST FLOOR

- Super king size bedroom with en-suite bathroom
- Super king size bedroom with en-suite bathroom and fireplace



Super King Bedroom

Type: Super King

Floor: first floor

Bed size: 1,80 m x 2 m

Bathroom: en-suite, shower

Amenity: air conditioning

VILLA MOLINELLA

FIRST FLOOR

Super King Bedroom

Type: Super King

Floor: first floor

Bed size: 1,80 m x 2 m

Bathroom: en-suite, shower and bathtub

Amenities: air conditioning, fireplace, exterior access





VILLA MOLINELLA
TENUTA DI MURLO