



VILLA PENNA
TENUTA DI MURLO



VILLA PENNA

THE PROPERTY

Among the many gems of the Murlo Estate, Villa Penna can be considered the crown jewel.

Ideal for those who just want to get away from it all and surrender to complete privacy at the height of luxury.

Penna offers the very best of the Murlo Estate in terms of quality of the interior decoration and outdoor facilities.

Immediately greeted by the majestic arched window that enhances the spacious living room filling it with ethereal light, guests can enjoy the contemporary style of the interiors, the lavish fabrics and the relaxed atmosphere.



SLEEPS
8



BEDROOMS
4



BATHROOMS
4



POOL
14 M X 4 M



Villa Penna pool cottage



Villa Penna and its beautiful surroundings

LOCATION

Nearest Airports

Perugia
30 km - 30 min

Roma
230 km - 2 h 30 min

Firenze
169 km - 2 h

Ancona
136 km - 1 h 40 min

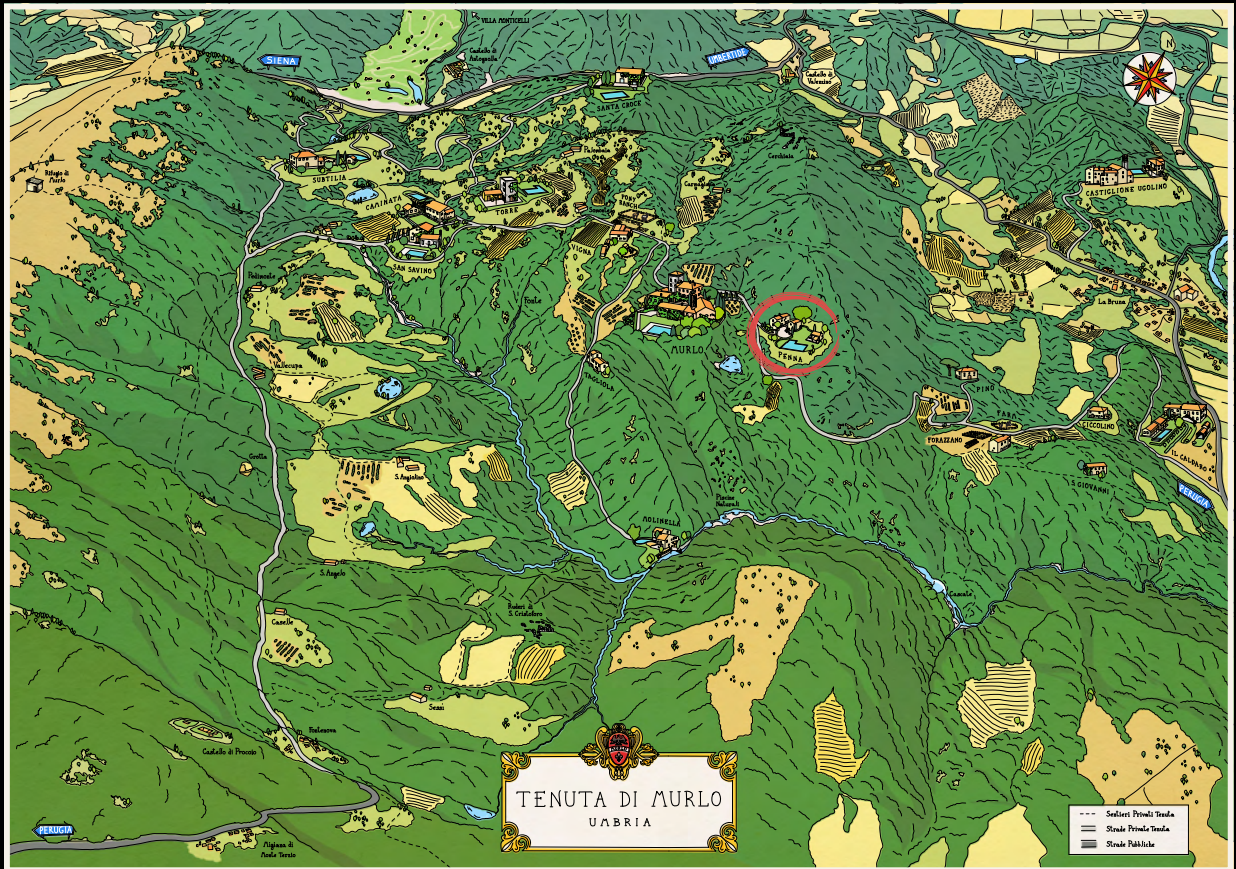
Nearest Cities

Umbertide
15 km - 20 min

Perugia
20 km - 25 min

Assisi
47 km - 40 min

Cortona
48 km - 45 min



Tenuta di Murlo map
Outlined by the circle Villa Penna



Villa Penna courtyard in the evening

AMENITIES

- ◆ Private infinity pool (4 m x 14 m plus a shallow water beach of 3 m x 6 m) – pool heating on request and thermal pool cover available
- ◆ Luxurious pool cottage with stone-built barbecue, sitting room and dining table with gorgeous views
- ◆ Pergola by the pool cottage with sofa and armchairs
- ◆ Sunbeds around the pool and under the century old oaks
- ◆ Panoramic terraces with sofas and chairs in the '*piazzetta*' between main unit and guest house
- ◆ Dining table in the garden near the kitchen
- ◆ Wood oven in front of the outdoor dining table
- ◆ Private fenced and landscaped garden
- ◆ Firepit
- ◆ Air conditioning throughout the villa and the guest house
- ◆ Table tennis available on request
- ◆ Private parking onsite





The light-filled sitting room with fireplace

The sitting room with stairs up to the kitchen





The elegant kitchen on the ground floor

A glimpse of the dining space





Super King Bedroom on the first floor of the main unit



The en-suite bathroom on the first floor of the main unit

The 'Piazzetta' enclosed between the Main Unit and the Guest House



Lovely wooden dining table on the outside between the two units





The furnished panoramic terraces in the 'piazzetta'





The luxurious pool cottage and its amazing view



The charming pergola by the pool

The interiors of the pool cottage with stone built barbecue, sitting room and dining table





Villa Penna when the sun goes down



Sunset of unspeakable beauty by Villa Penna infinity pool



Villa Penna from above

VILLA PENNA

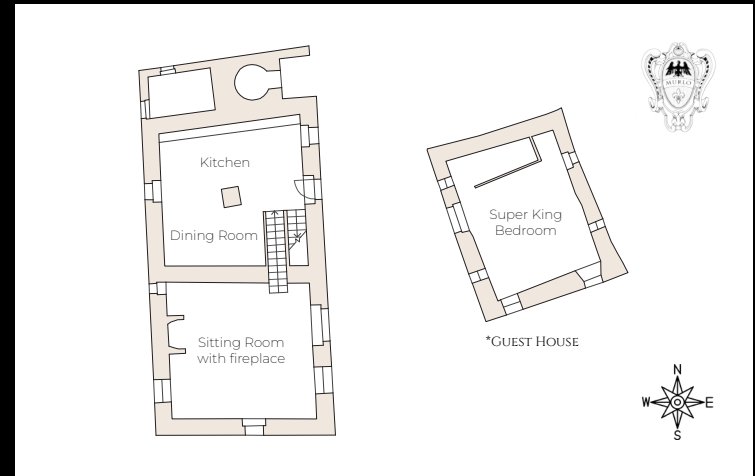
GROUND FLOOR

Main Unit

- Sitting room with fireplace
- Large open kitchen with dining room

Guest House

- Super king size bedroom with en-suite bathroom



Super King Bedroom

Type: Super King
Floor: guest house - ground floor
Bed size: 1,80 m x 2 m
Bathroom: en-suite, shower
Amenities: air conditioning, exterior access

VILLA PENNA

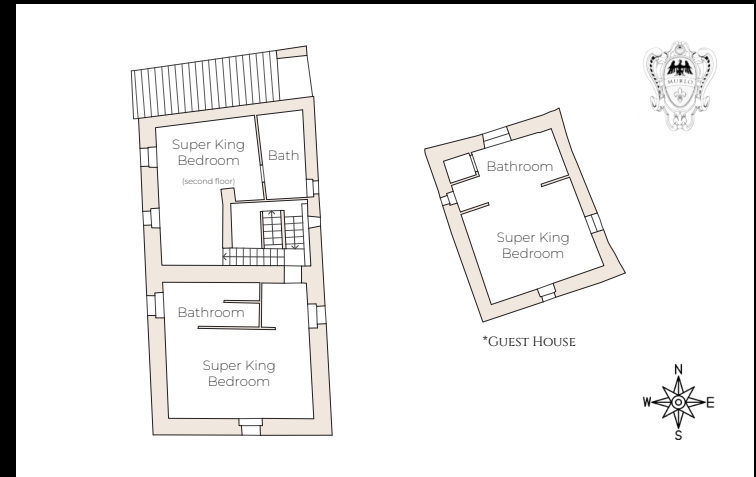
FIRST/SECOND FLOOR

Main Unit

- Super king size bedroom with en-suite bathroom
- Super king size bedroom with en-suite bathroom (few steps to second floor)

Guest House

- Super king size bedroom with en-suite bathroom



Super King Bedroom

Type: Super King
Floor: guest house - first floor
Bed size: 1,80 m x 2 m
Bathroom: en-suite, shower
Amenities: air conditioning, exterior access

VILLA PENNA

FIRST/SECOND FLOOR

Super King Bedroom (top right)

Type: Super King

Floor: second floor

Bed size: 1,80 m x 2 m

Bathroom: en-suite, shower

Amenity: air conditioning



Super King Bedroom (bottom left)

Type: Super King

Floor: first floor

Bed size: 1,80 m x 2 m

Bathroom: en-suite, shower

Amenity: air conditioning



VILLA PENNA
TENUTA DI MURLO